

CMD
4DS/12.23

Direction Control Valve
4DS Series



Replaces : 4WE

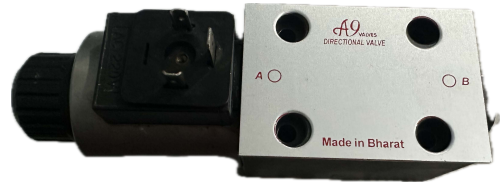
Series : 4 WE

up to 315 Bar

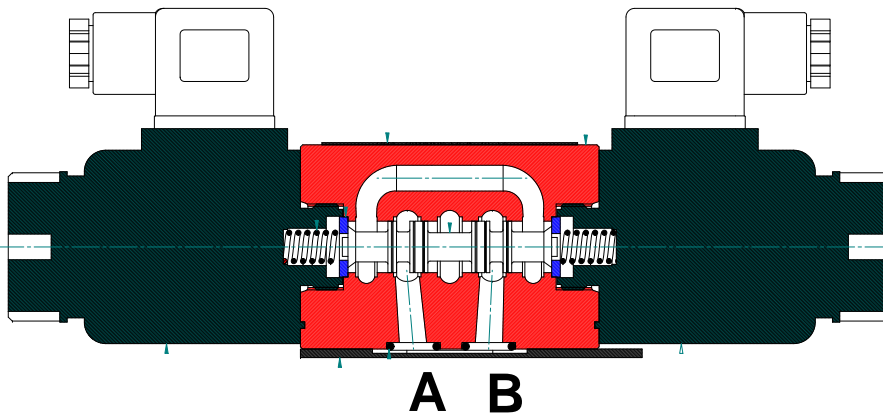
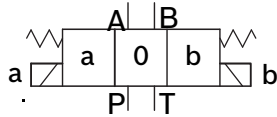
up to 80 L/min.

Features :

- Solenoid Operated spool type valve
- Coil voltage 24VDC , 220V AC ,110V
- CETOP Standard.
- Manual Override.
- Coil can be rotated 360degree.



Symbols :



Ordering Code

| | 01 | 02 | 03 | 04 | 05 | 06 | 07 |
|-----------|------------|-----------|----------|-------------|------------|-----------|------------|
| Eg | 4WE | 06 | D | A220 | X23 | 01 | 315 |

- 01: 4 Main port : **4DS**
- 02: Valve Size : NG6 = **06** , NG10 = **10**
- 03: Spool Type : Refer page 2 for spool type eg **D, E, J, G**
- 04: Coil Voltage. : 220 V = **A220**; 24VDC = **D24** ; 110VAC = **A110**
- 05: Design series : **X 23**
- 06: Din Cap : LED Indicator = **01** ; No code for no indicator
- 07: pressure : 315 Bar = **3**

CMD 4DS
12.23

Direction Control Valve 4DS Series

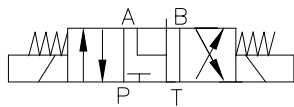


Replaces : 4WE

Series : 4WE

up to 315 Bar

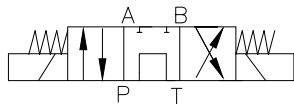
up to 80 L/min.



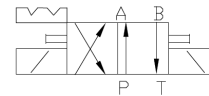
= J



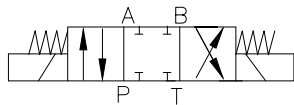
= D



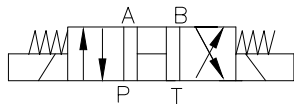
= G



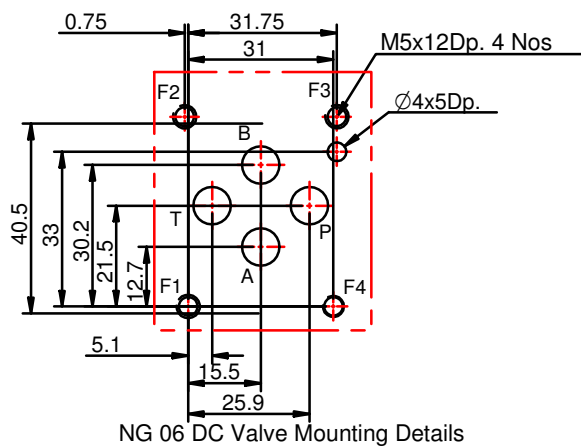
=D/Of



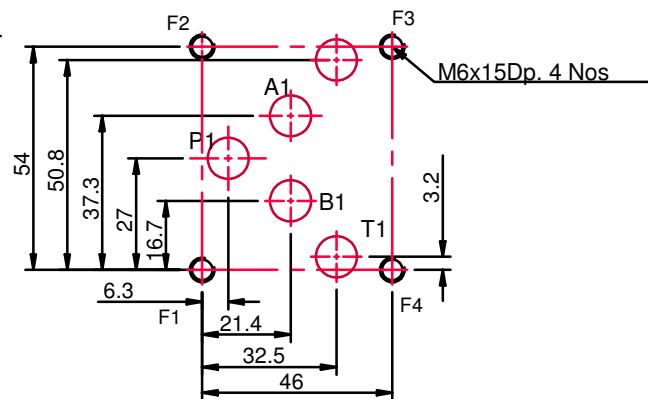
= E



= H



NG 06 DC Valve Mounting Details



NG 10 DC Valve Mounting Details

Technical data (for other sizes and special application, please contact mktg@cmhydraulics.com)

| | | |
|------------------------------------|--------------------|---|
| Maximum operating pressure | bar | 315 Bar |
| Maximum flow | | NG 06 : 40 LPM ; NG 10: 80 LPM |
| Pressure fluid | | Mineral oil (HL,HLP) to DIN 51 524; Fast bio-degradable pressure fluids to VDMA 24 568;HTEG (rape seed oil); HEPG (polyglycol); HEES (synthetic ester); other fluids on request |
| Pressure fluid - temperature range | °C | - 30 to + 80 |
| Viscosity range | mm ² /s | 2.8 to 500 |
| Degree of contamination | | Maximum permissible degree of contamination of the fluid is to NAS 1638 class 9. |