

CMD  
TCNRM/12.23

# Throttle cum Non Return Valve Modularity TCNRM



Replaces : TCNRM 11.11

Size : 06 & 10

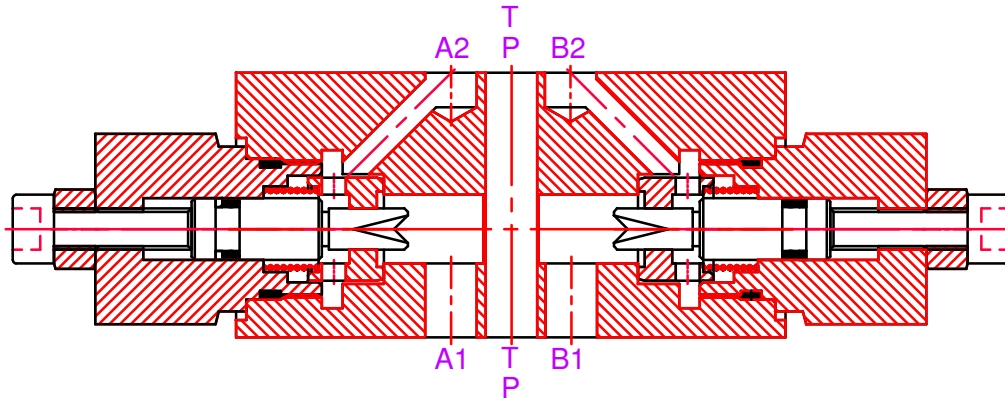
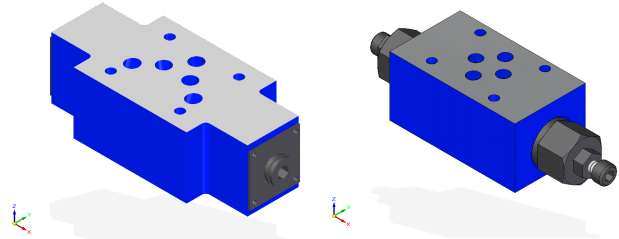
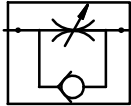
up to 315 bar

up to 100 L/min.

**Features :**

- Modular construction (Subplate mounting)
- Material Steel & SS
- Fine throttling adjustments

**Symbols :**



**Ordering code**

TCNRM 06 AB 1 \*

Nominal size 06  
Nominal size 10

=06  
=10

Throttling Port A & B  
Throttling Port A  
Throttling Port B

=AB  
=A  
=B

Further details to specify

Revision status index

- 0= Cracking pressure 0 bar
  - 1= Cracking pressure 1 bar
  - 2= Cracking pressure 2 bar
  - 3= Cracking pressure 3 bar
  - 5= Cracking pressure 5 bar
- } Check Valve  
Cracking pressure

Technical data (for other sizes and special application, please contact [mktg@cmhydraulics.com](mailto:mktg@cmhydraulics.com))

Maximum operating pressure

bar 315 Bar

Maximum flow

Size	06	10
L/min.	40	100

Pressure fluid

Mineral oil (HL,HLP) to DIN 51 524;  
Fast bio-degradable pressure fluids to  
VDMA 24 568;HTEG (rape seed oil);  
HEPG (polyglycol); HEES (synthetic ester);  
other fluids on request

Pressure fluid - temperature range

°C - 30 to + 80

Viscosity range

mm<sup>2</sup>/s 2.8 to 500

Degree of contamination

Maximum permissible degree of contamination of the fluid is to NAS 1638 class 9.

Weight

Size	06	10
Kg.	1.1	3.7

CMD  
TCNRM/12.23

# Throttle cum Non Return Valve Modularity TCNRM



Replaces : TCNRM 11.11

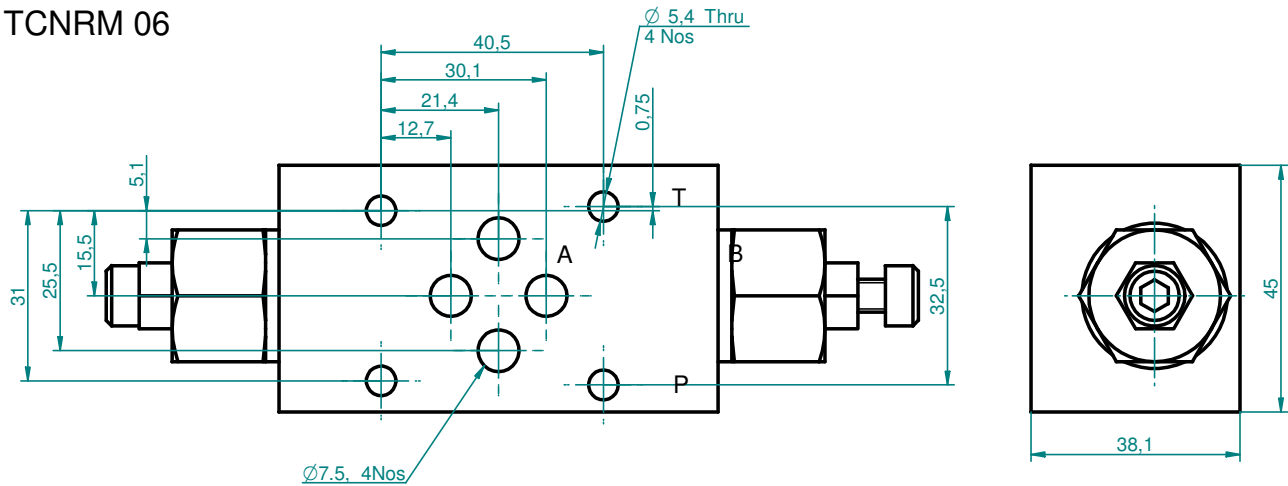
Size : 06 to 25

up to 315 bar

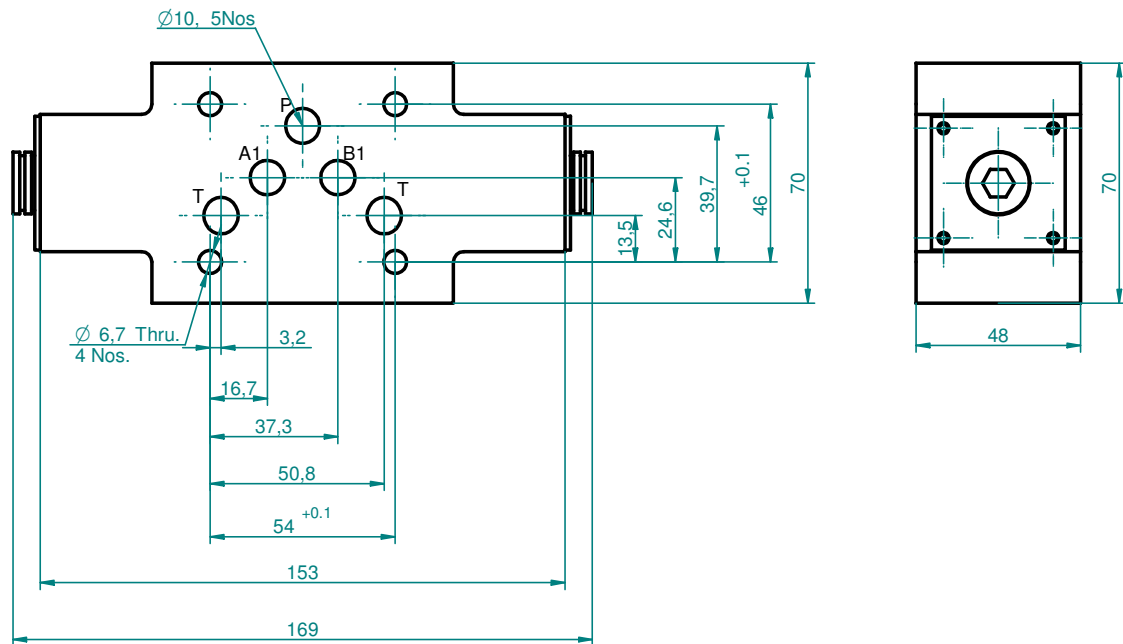
up to 100 L/min.

## Dimensional Details

### TCNRM 06



### TCNRM 10



CMD  
TCNRT/12.23

# Throttle cum Non Return Valve type TCNRT



Replaces : TCNRT 11.11

Size : 06 to 15

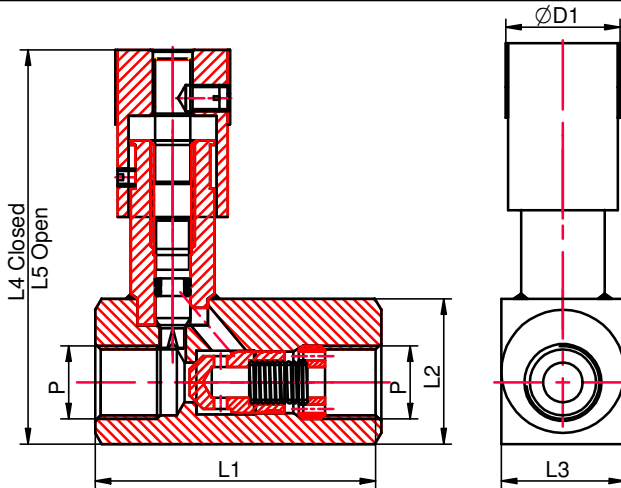
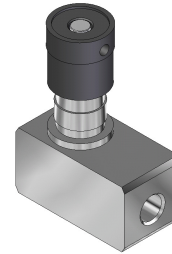
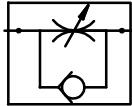
up to 400 bar

up to 450 L/min.

**Features :**

- For Inline mounting
- Material Steel & SS
- Color Scale for better repeatability

**Symbols :**



Size	P	L1	L2	L3	L4	L5	ØD1
06	1/4" BSP	58	30	30	80	85	26
08	3/8" BSP	65	33	28	90	95	26
10	1/2" BSP	90	35	35	104	109	27
15	3/4" BSP	100	45	45	114	119	29

**Ordering code**

TCNRT 1 \*

Nominal size 06  
Nominal size 08  
Nominal size 10  
Nominal size 15

=06  
=08  
=10  
=15

Material - Steel  
Material - SS

=1  
=2

Further details to specify

Revision status index

- 0= Cracking pressure 0 bar
- 1= Cracking pressure 1 bar
- 2= Cracking pressure 2 bar
- 3= Cracking pressure 3 bar
- 5= Cracking pressure 5 bar

**Technical data** (for other sizes and special application, please contact [mktg@cmhydraulics.com](mailto:mktg@cmhydraulics.com))

Maximum operating pressure	bar	400 Bar			
Maximum flow	Size	06	08	10	15
	L/min.	18	36	60	150
Pressure fluid		Mineral oil (HL,HLP) to DIN 51 524; Fast bio-degradable pressure fluids to VDMA 24 568;HTEG (rape seed oil); HEPG (polyglycol); HEES (synthetic ester); other fluids on request			
Pressure fluid - temperature range	°C	- 30 to + 80			
Viscosity range	mm <sup>2</sup> /s	2.8 to 500			
Degree of contamination		Maximum permissible degree of contamination of the fluid is to NAS 1638 class 9.			
Weight	Size	06	08	10	15
	Kg.	0.46	0.65	0.85	1.6

CMD  
SOS/11.11

# Shut Off Valve Type : SOS



Replaces : SOS/10.09

Size : 06-15

up to 315 bar

up to 32 L/min.

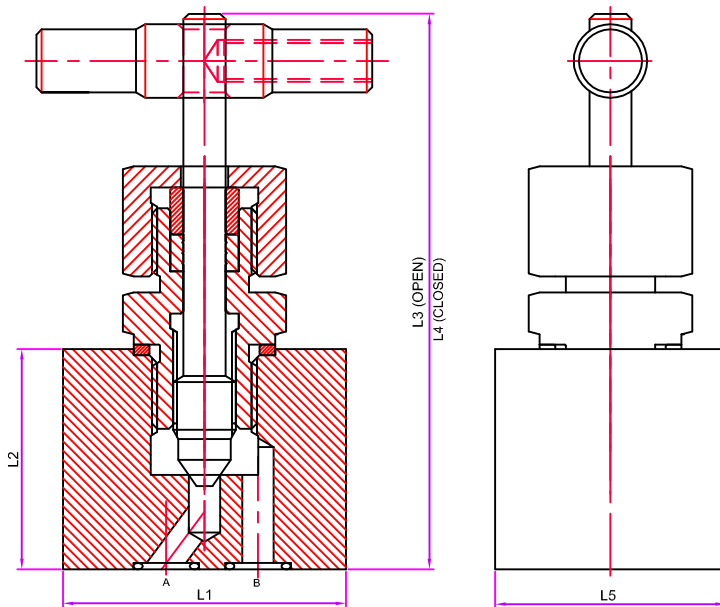
**Features :**

- For subplate mounting
- Material Steel & SS

Space for 3-D view

Symbol :

**Sectional view**



Size	L1	L2	L3	L4	L5
06	54	42	114	105	44
08	54	42	114	105	44
10	75	50	116	126	65
15	75	50	119	130	65

**Ordering code**

SOS    \*    \*

Shut Off Valve Subplate Mounting

Further details to specify

Nominal size 06	=06
Nominal size 08	=08
Nominal size 10	=10
Nominal size 15	=15

CMD  
SOS/11.11

# Shut Off Valve Type : SOS



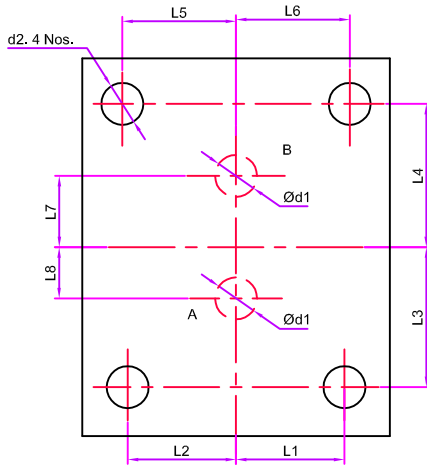
Replaces : SOS/10.09

Size : 06-15

up to 315 bar

up to 32 L/min.

## Mounting dimensions



Size	L1	L2	L3	L4	L5	L6	L7	L8	Ød1	d2
06	15.5	15.5	20	20.5	16.25	16.25	10.2	7.3	Ø6	M5
08	15.5	15.5	20	20.5	16.25	16.25	10.2	7.3	Ø8	M5
10	23	23	27	27	23	23	14.2	10.8	Ø10	M8
15	23	23	27	27	23	23	20.2	10.8	Ø15	M8

## Technical data (for special application, please contact us)

Mounting style	Subplate Mounting					
Maximum operating pressure	bar	315				
Maximum flow	Size	06	08	10	15	
	L/min.					
Pressure fluid	Mineral oil (HL,HLP) to DIN 51 524; Fast bio-degradable pressure fluids to VDMA 24 568;HTEG (rape seed oil); HEPG (polyglycol); HEES (synthetic ester); other fluids on request					
Pressure fluid - temperature range	°C	- 30 to + 80				
Viscosity range	mm <sup>2</sup> /s	2.8 to 500				
Degree of contamination	Maximum permissible degree of contamination of the fluid is to NAS 1638 class 9.					
Weight	Size	06	08	10	15	
	Kg.	1	1	2.1	2.1	

CMD  
NV/12.23

# Needle valve type NV



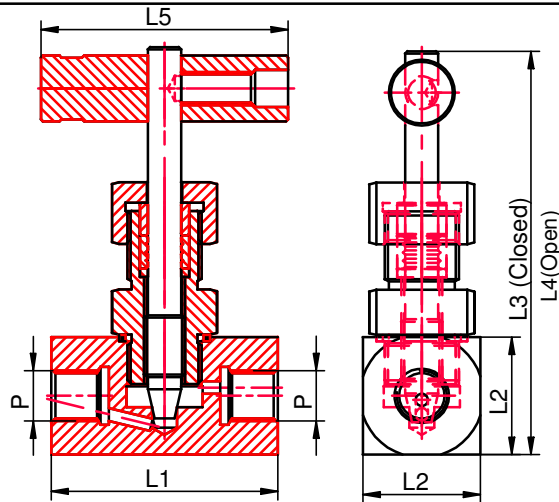
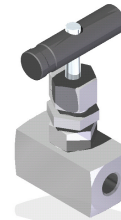
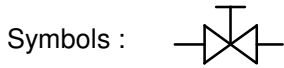
Replaces : NV/11.11

Size : 06 to 15

up to 1000 bar

up to 450 L/min.

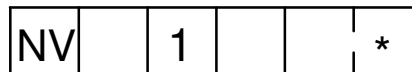
- Features :
- For Inline mounting
  - For Panel Mounting
  - Material Steel & SS



Size	P	L1	L2	L3	L4	L5
06	1/4" BSP	55	28.5	98	108	60
08	3/8" BSP	65	28.5	99	108	60
10	1/2" BSP	70	32	101	112	60
15	3/4" BSP	90	36	103	115	60

(For 400 Bar Pressure)

## Ordering code



Nominal size 06  
Nominal size 08  
Nominal size 10  
Nominal size 15

=06  
=08  
=10  
=15

Further details to specify  
Revision status index

Material - Steel  
Material - SS

=1  
=2

400= Up to 400 Bar  
700= Up to 700 Bar

## Technical data (for special application, please contact [mktg@cmhydraulics.com](mailto:mktg@cmhydraulics.com))

Maximum operating pressure	bar	300, 700~1000 Bar			
Maximum flow	Size	06	08	10	15
	L/min.	18	36	60	150
Pressure fluid		Mineral oil (HL,HLP) to DIN 51 524; Fast bio-degradable pressure fluids to VDMA 24 568;HTEG (rape seed oil); HEPG (polyglycol); HEES (synthetic ester); other fluids on request			
Pressure fluid - temperature range	°C	- 30 to + 80			
Viscosity range	mm <sup>2</sup> /s	2.8 to 500			
Degree of contamination		Maximum permissible degree of contamination of the fluid is to NAS 1638 class 9.			
Weight	Size	06	08	10	15
	Kg.	0.55	0.55	0.75	0.8