

CMD
HPU/12.23

Hydraulic Power Units type HPU

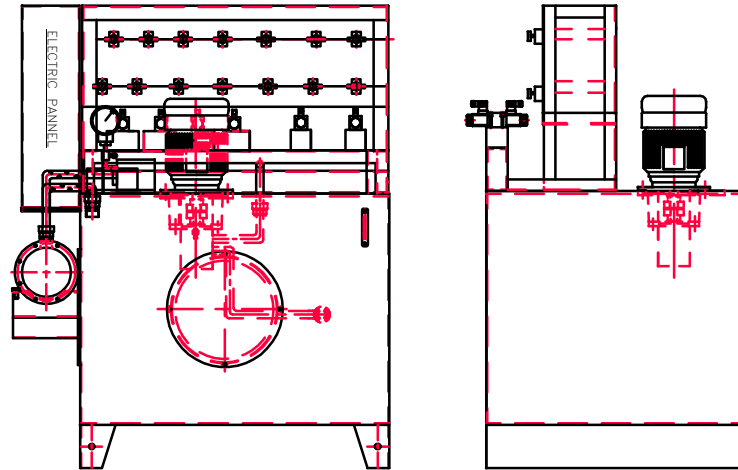


Replaces : HPU/11.11

Features :

- Options of float switch, temperature controller, Accumulator, etc
- Customized as per requirement
- Easy maintenance

Space for 3-D view



Ordering code

HPU											*
-----	--	--	--	--	--	--	--	--	--	--	---

<p>Oil Reservoir</p> <table> <tr> <td>150 Lts</td> <td>=150</td> </tr> <tr> <td>250 Lts</td> <td>=250</td> </tr> <tr> <td>500 Lts</td> <td>=500</td> </tr> <tr> <td>800 Lts</td> <td>=800</td> </tr> <tr> <td>1000 Lts</td> <td>=1000</td> </tr> </table> <p>Reservoir Material</p> <table> <tr> <td>Carbon Steel</td> <td>=0 (Std)</td> </tr> </table> <p>Electric Motors in HP (As per requirement) (Refer table for selection criteria) 5, 7.5, 10, 12.5, 15, 20, 25, 30, 40, 50, 60, 75</p> <p>Pump</p> <table> <tr> <td>Gear Pump</td> <td>=1</td> </tr> <tr> <td>Vane Pump</td> <td>=2</td> </tr> <tr> <td>Axial Piston Pump</td> <td>=3</td> </tr> </table>	150 Lts	=150	250 Lts	=250	500 Lts	=500	800 Lts	=800	1000 Lts	=1000	Carbon Steel	=0 (Std)	Gear Pump	=1	Vane Pump	=2	Axial Piston Pump	=3	<p>Further details to specify</p> <p>No. of DC Valve Stations in Manifold block</p> <table> <tr> <td>1=</td> <td>Single station</td> </tr> <tr> <td>2=</td> <td>Double station</td> </tr> <tr> <td>3=</td> <td>Triple station</td> </tr> </table> <p>Unloading DC Valves (NG6 or NG10 based on requirement)</p> <table> <tr> <td>0=</td> <td>Solenoid Operated 24V DC (Std)</td> </tr> <tr> <td>1=</td> <td>Solenoid Operated 110V AC</td> </tr> <tr> <td>2=</td> <td>Solenoid Operated 220V AC</td> </tr> <tr> <td>3=</td> <td>Hand Operated</td> </tr> </table> <p>Heat Exchangers/Oil coolers</p> <table> <tr> <td>1=</td> <td>With Oil Cooler</td> </tr> <tr> <td>2=</td> <td>With out Oil Cooler</td> </tr> </table> <p>Return Line filters (25 Microns)</p> <table> <tr> <td>1=</td> <td>Without clog indicator</td> </tr> <tr> <td>2=</td> <td>With Clog indicator</td> </tr> </table> <p>Electrical/Electronics</p> <table> <tr> <td>1=</td> <td>With Electrical/Electronics</td> </tr> <tr> <td>2=</td> <td>Without Electrical/Electronics</td> </tr> </table>	1=	Single station	2=	Double station	3=	Triple station	0=	Solenoid Operated 24V DC (Std)	1=	Solenoid Operated 110V AC	2=	Solenoid Operated 220V AC	3=	Hand Operated	1=	With Oil Cooler	2=	With out Oil Cooler	1=	Without clog indicator	2=	With Clog indicator	1=	With Electrical/Electronics	2=	Without Electrical/Electronics
150 Lts	=150																																												
250 Lts	=250																																												
500 Lts	=500																																												
800 Lts	=800																																												
1000 Lts	=1000																																												
Carbon Steel	=0 (Std)																																												
Gear Pump	=1																																												
Vane Pump	=2																																												
Axial Piston Pump	=3																																												
1=	Single station																																												
2=	Double station																																												
3=	Triple station																																												
0=	Solenoid Operated 24V DC (Std)																																												
1=	Solenoid Operated 110V AC																																												
2=	Solenoid Operated 220V AC																																												
3=	Hand Operated																																												
1=	With Oil Cooler																																												
2=	With out Oil Cooler																																												
1=	Without clog indicator																																												
2=	With Clog indicator																																												
1=	With Electrical/Electronics																																												
2=	Without Electrical/Electronics																																												

CMD
HPU/12.23

Hydraulic Power Units type HPU



Replaces : HPU/11.11

Technical data (for other sizes and special application, please contact mktg@cmhydraulics.com)

Maximum operating pressure	bar	250 Bar
Reservoir	Ltrs	100, 150, 250, 400, 600, 800, 1000
Power Supply		415 ± 10 V 50 Hz AC No. of Poles 4 IP 55 Protection
Pressure fluid		Mineral oil (HL, HLP) to DIN 51 524; Fast bio-degradable pressure fluids to VDMA 24 568; HTEG (rape seed oil); HEPG (polyglycol); HEES (synthetic ester); other fluids on request
Return line Filters capacity (3~5 Times of flow capacity)	Microns	25 (Std) (higher microns on request)
Heat Exchangers (25% of Motor capacity)	Type	Shell & Tube (Std) (Air blast & Plate type on request)
Pressure fluid - temperature range	°C	- 30 to + 80
Viscosity range	mm ² /s	2.8 to 500
Degree of contamination		Maximum permissible degree of contamination of the fluid is to NAS 1638 class 9.

Motor Selection table (in HP)

Pr. Range Flow (CC)/Rev (Bar)	100	150	250
12	5	7.5	12.5
16	7.5	10	15
23	10	15	25
28	12.5	20	30
32	12.5	20	30
45	20	30	50
56	25	40	60
63	25	40	60
80	35	50	75
90	40	60	-

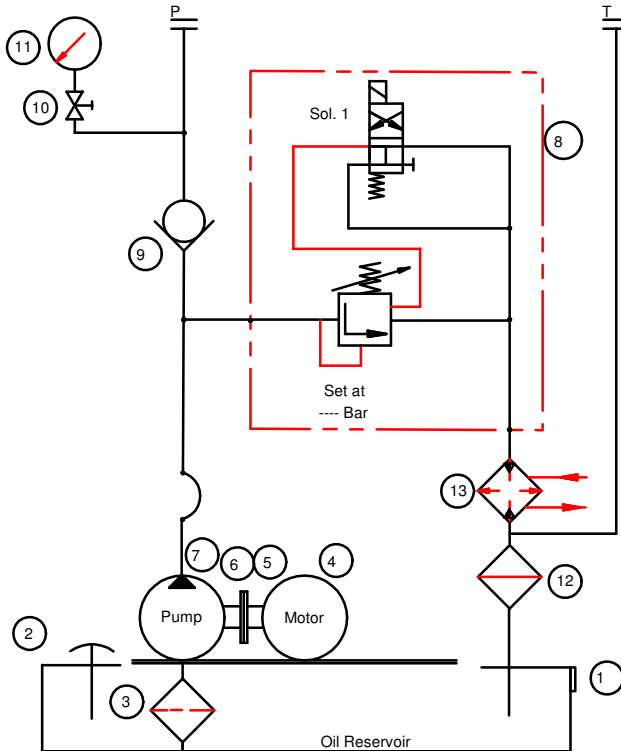
CMD
HPU/12.23

Hydraulic Power Units type HPU

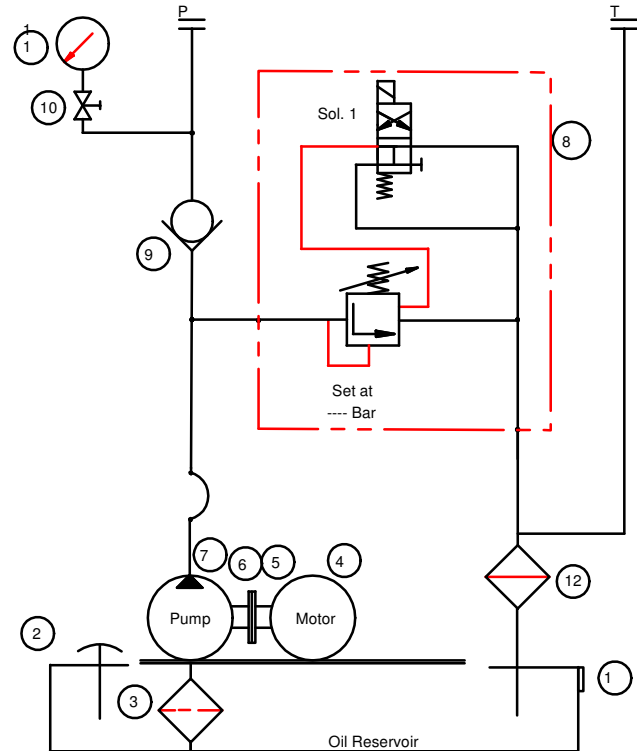


Replaces : HPU/11.11

Typical Circuit :



With Heat Exchanger



With out Heat Exchanger

1. Oil Level Indicator
2. Filler Breather
3. Suction Strainer
4. Electrical Motor
5. Bell Housing
6. Coupling
7. Hydraulic Pump
8. Unloading block with DC Valve
9. Non Return valve
10. Gauge Isolator
11. Pressure Gauge
12. Return Line Filter
13. Heat Exchanger

CMD
HPUM/12.23

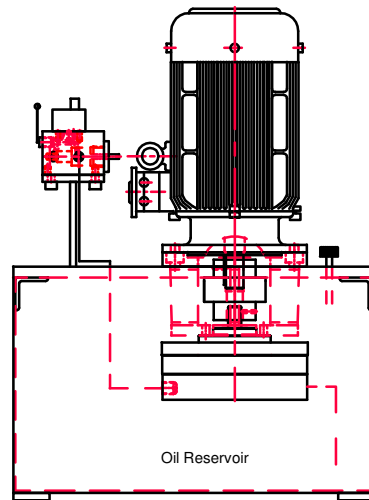
Hydraulic Power Units-Mini type HPU-M



Replaces : HPUM/11.11

Features :

- Compact Design
- Customized as per requirement
- Portable with trolley (Option)
- Easy maintenance



Ordering code



Oil Reservoir

20 Lts	=20
40 Lts	=40
60 Lts	=60

Reservoir Material

Carbon Steel	=1
Stainless Steel	=2
Aluminium	=3

Electric Motors (Refer table for selection criteria)

0.5 HP	=0.5
1 HP	=1
2 HP	=2
3 HP	=3
5 HP	=5

Further details to specify

No. of DC Valve Stations in Manifold block

1=	Single station
2=	Double station
3=	Triple station

Unloading DC Valves (NG 6 Size)

0=	Solenoid Operated 24V DC (Std)
1=	Solenoid Operated 110V AC
2=	Solenoid Operated 220V AC
3=	Hand Operated

Heat Exchangers/Oil coolers

1=	With Oil Cooler (> 9 LPM)
2=	With out Oil Cooler

CMD
HPUM/12.23

Hydraulic Power Units-Mini
type HPU-M



Replaces : HPUM/11.11

Technical data (for other sizes and special application, please contact mktg@cmhydraulics.com)

Maximum operating pressure	bar	700 Bar (Refer Table)
Reservoir	Ltrs	20, 40, 60
Power Supply		415 ± 10 V 50 Hz AC No. of Poles 4 IP 55 Protection
Pressure fluid		Mineral oil (HL, HLP) to DIN 51 524; Fast bio-degradable pressure fluids to VDMA 24 568; HTEG (rape seed oil); HEPG (polyglycol); HEES (synthetic ester); other fluids on request
Return line Filters capacity	Microns	25
Pressure fluid - temperature range	°C	- 30 to + 80
Viscosity range	mm ² /s	2.8 to 500
Degree of contamination		Maximum permissible degree of contamination of the fluid is to NAS 1638 class 9.

Motor Selection table (in HP)

Pr. Range Flow (CC)/Rev (Bar)	Upto 60	60 ~ 150	150 ~ 300	300 ~ 500	500 ~ 700
1.5	0.5	1	2	3	5
2.0	0.5	2	3	5	-
2.5	1	2	3	5	-
3.0	1	2	5	-	-
3.5	1	3	5	-	-
4.0	1	3	5	-	-
4.5	1.5	3	5	-	-
5.0	1.5	3	5	-	-
5.5	1.5	5	-	-	-
7.0	2	5	-	-	-
8.0	2	5	-	-	-
8.5	2	5	-	-	-

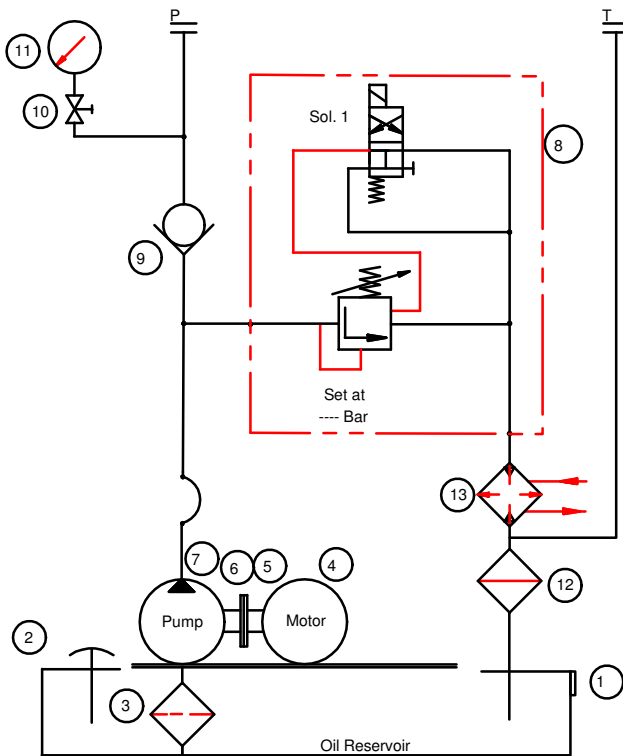
CMD
HPUM/12.23

Hydraulic Power Units-Mini type HPU-M

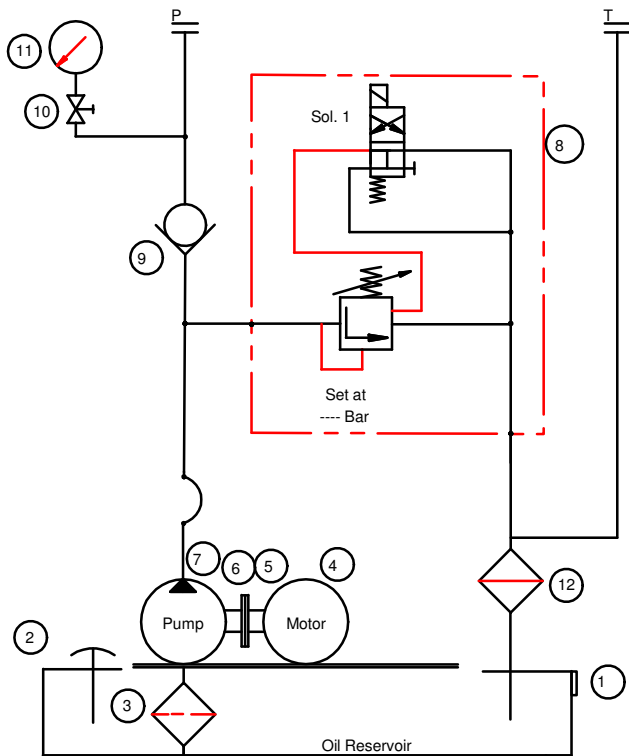


Replaces : HPUM/11.11

Typical Circuit :



With Heat Exchanger



With out Heat Exchanger

1. Oil Level Indicator
2. Filler Breather
3. Suction Strainer
4. Electrical Motor
5. Bell Housing
6. Coupling
7. Hydraulic Pump
8. Unloading block with DC Valve
9. Non Return valve
10. Gauge Isolator
11. Pressure Gauge
12. Return Line Filter
13. Heat Exchanger